

AudioCodes CPE & Access Gateway Products

Mediant™ 800 MSBR



- An all-in-one integrated device for VoIP, Data, Security and Access
- Consistent performance driven by dual-core architecture
- Branch survivability for distributed enterprises during WAN failures
- Flexible multiple WAN connectivity for redundancy and improved SLA
- Ideal for small and medium sized businesses (SMB) and enterprises (SME)
- Clear single managed point of demarcation
- SIP Trunking connectivity through E-SBC
- 802.11n WiFi and LAN Power-over-Ethernet (PoE) support
- Microsoft Lync Enhanced Gateway
- Scalability: from four analog voice channels, up to four E1/T1 voice trunks

AudioCodes Mediant™ 800 MSBR is an all-in-one box solution, designed to provide converged data and voice connectivity for small-to-mid size enterprise and business (SME and SMB) customers, and to form a well-managed point of demarcation for service providers.

Based on AudioCodes' VoIPerfectHD technology, the Mediant 800 MSBR integrates a variety of communication functions into a single platform, including Router, WAN access, branch survivability, VoIP mediation, Enterprise Session Border Controller, voice and data security, and an optional server for hosting added value services.

Multi-Service Business Router

FLEXIBLE WAN ACCESS CAPABILITIES

AudioCodes Mediant 800 MSBR has a versatile WAN interface supporting copper and optical fiber Gigabit Ethernet, T1/E1 WAN and a selection of DSL protocols such as SHDSL, ADSL2+ and VDSL. It also supports a 4G/3G cellular connection through a USB dongle. This range of options enables great flexibility and branch resiliency in connecting to service provider networks.

The Mediant 800 MSBR provides redundant WAN connectivity links for continued services in the event of WAN failure. Each device comes with copper Gigabit Ethernet (GE) along with a mix of additional two WAN ports of xDSL or GE (copper or Optical Fiber SFP)

INTEGRATED ROUTER AND LAN SWITCH

AudioCodes Mediant 800 MSBR has an integral LAN switch supporting up to 12 Power-over-Ethernet (PoE) LAN ports for IP phones and other PoE devices. It is equipped with an integrated WiFi (802.11n) access point, as well as optional dynamic and static routing capabilities.

To accommodate connectivity support for rich multimedia devices, such as video phones and motored cameras, the Mediant 800 MSBR supports 802.3at PoE of up to 30 Watts per port and 200 Watts in total.

BRANCH SURVIVABILITY, SECURITY AND QoE FOR CLOUD SERVICES

With support for multiple redundant WAN links and the integrated Cloud Resilience Package (CRP) and Standalone Survivability (SAS) features, the Mediant 800 MSBR facilitates local internal calling, alternate WAN connectivity and PSTN fallback for making and receiving external calls during WAN interruptions, along with advanced security features and quality of experience (QoE) tools.

OPEN PLATFORM FOR HOSTING VALUE ADDED APPLICATIONS

AudioCodes Mediant 800 MSBR extends the flexibility of the Multi-Service Business Router with a built-in Open Solution Network (OSN) server option based on an Intel processor. Independent software vendors and OEM customers can utilize this integrated, general purpose server to host their own applications such as IP-PBX, IVR, call center, conferencing, and more.

TARGET APPLICATIONS

- SIP Trunking
- IP Centrex and hosted services
- Service Provider managed services
- Migration from TDM to IP

Mediant™ 800 Multi-Service Business Router

POWERFUL MEDIA PROCESSING SERVICES

The on-board DSP resource farm enables the implementation of a variety of narrowband and wideband VoIP media processing services such as recording, integrated voice response (IVR), conferencing and transcoding. Utilizing AudioCodes' dedicated DSP resources enables a more robust and predictable voice performance compared to systems that are based on general purpose CPUs.

MEDIANT 800 MSBR IN BUSINESS SERVICES IMPLEMENTATIONS

As small and medium businesses and enterprises strive to control their communications' operating and equipment costs, outsourcing their voice and data infrastructure to a service provider is becoming an attractive option. The Mediant 800 MSBR offers service providers who are delivering hosted and managed communication services, a clear and easy-to-manage demarcation point, combining multiple WAN Access, routing and security, dual PSTN fallback, secured VoIP and branch survivability.

By using the Mediant 800 MSBR, service providers' business customers can easily and securely hook up to cloud-based services.

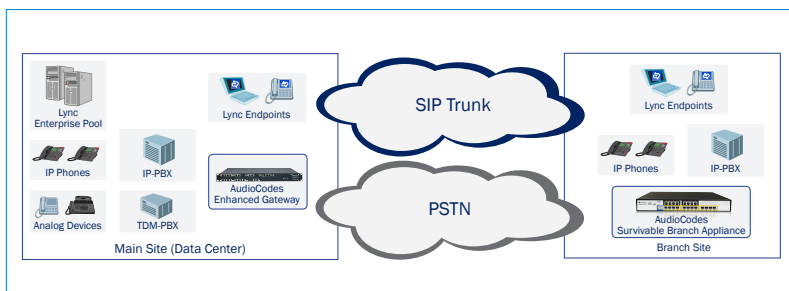
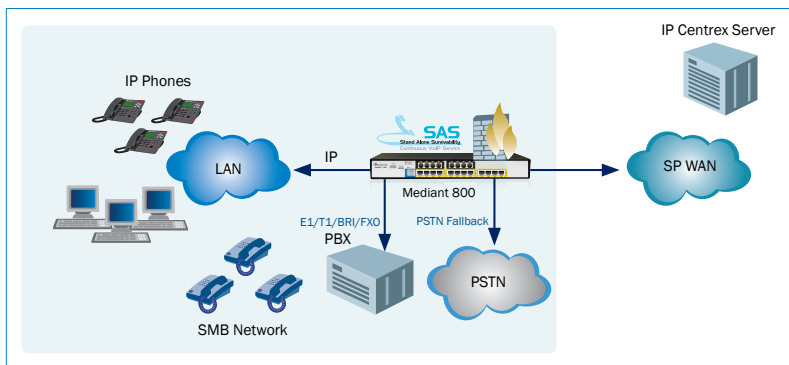
MEDIANT 800 MSBR IN MICROSOFT LYNC ENTERPRISE NETWORKS

Reliable network services at branch offices are essential for maintaining application availability for critical business processes. In Microsoft Lync environments, AudioCodes Mediant 800 MSBR can be deployed as an Enhanced Gateway or Survivable Branch Appliance (SBA) to offer branch-office resiliency for the local IP-Phones along with secured connectivity to the head office's Lync Server and unique built-in complementary services.

These services include integrated data services, such as the Router, WAN termination, Data firewall, Secured SIP Trunk connectivity through an integrated Enterprise class session border controller, advanced applications such as SIP Phones and smartphones integration, and passive recording for Lync.

ENTERPRISE SESSION BORDER CONTROLLER (E-SBC)

By upgrading the platform with software E-SBC licenses, the Mediant 800 MSBR protects the enterprise network and provides secure connectivity into SIP Trunking and other service provider applications. The key security features include Call Admission Control (CAC), encryption and authentication, topology hiding, traffic separation and protection against Denial of Service (DoS) attacks.



Mediant™ 800 Multi-Service Business Router

SPECIFICATIONS*

Networking Interfaces

WAN	Multiple WAN interfaces Support for T1/E1, SHDSL, ADSL2+, VDSL2 vectoring, 100Base-X, 1000Base-X (SFP Format)
LAN	2 configurations: 4 ports 10/100/1000Base-T plus additional 8 10/100Base-TX ports or 2 ports 10/100/1000Base-T PoE- Power-Over Ethernet on all ports is optional (Compliant to 802.3at-2009 with auto-detection Up to 30W per port, up to 200W in total), PoE management
WiFi	WiFi Access Point support for 802.11 a/b/g/n

WAN Interfaces

ADSL2+ (Annex A, B, I, J, L, M)
SHDSL (Annex. A, B, F, G), 2Base-2L
VDSL1, VDSL2 (bandplan 997, 998, profiles 8, 12, 17, 30), 10PASS-TS
10/100/1000Base-X Full-Duplex SFP, 100Base-FX, 1000Base-SX/LX
EFM (802.3ah) for VDSL2 vectoring and SHDSL
ATM for ADSL and SHDSL
RFC2684, VC-MUX, LLC SNAP
8 PVCs, multiple IP interfaces
IP, IPoE, PPPoE, PPPoE, IPCP, NCP, LCP, PAP, CHAP, PPP, ML - PPP
ATM Service Categories (UBR, VBR-RT, VBR-nRT, CBR)

Telephony Interfaces

PSTN Capacity	Voice interfaces: The Mediant 800 is equipped with up to 12 analog PSTN interfaces, 8 BRI and 4 E1/T1 span, or a combination
Digital Interfaces	4 span E1/T1/J1 using RJ-48c connectors 8 BRI ports using RJ-48c connectors
Analog Interfaces	UP to 12 analog FXS/FXO ports using RJ-11 connectors Option of 1 FXS Lifeline ports in case of power failure
BRI Interfaces	8 BRI ports (16 calls), network S/T interfaces. NT or TE termination, using RJ-45 connectors

Data Routing

PPP, MLPPP, PPPoE, PPPoA, L2TP, IPoE, IPoA
ATM: Up to 8 PVCs
OAM-F5 (send/receive): loopback, continuity check
Shaping: UBR, VBR-NRT, VBR-RT, CBR
DHCP Client, Relay, server
VLAN
Layer 3 routing and Layer 2 bridging, Jumbo frames
Internal layer 2 switching
Static and dynamic routing (RIP1, RIP2, OSPFv2, BGPv4), Policy-Based Routing, VRRP
Multicast routing: IGMPv2
IPv6, IPv6/IPv4 Dual Stack, ICMPv6, DHCPv6, SLAAC

IP/VoIP Quality of Service

IEEE 802.1P, TOS, DiffServ labeling
IEEE 802.1Q VLAN tagging
RTCP-XR (Extended Reports per RFC 3611)
Shaping Policing, Queuing, Bandwidth Reservation (Optional)

Media Processing

Voice Coders	G.711, G.726, G.723.1, G.729A, AMR, G.722, AMR-WB (G.722.2), SILK, SILK-WB Independent dynamic vocoder selection per channel
Echo Cancellation	G.165 and G.168-2002, with 32, 64 or 128 msec tail length
Quality Enhancement	Dynamic programmable jitter buffer, VAD, CNG
DTMF/MF Tones	Packet-side or PSTN-side detection and generation, RFC 2833 compliant DTMF relay and Call Progress tones Detection and Generation
IP Transport	VoIP (RTP/RTCP) per IETF RFC 3550 and 3551, IPv6 Supported
Fax Transport	T.38 compliant (real time fax), Automatic bypass to PCM

Signaling

Digital - PSTN Protocols	CAS: MF-R1: T1 CAS (E&M, loop start, Feature Group-D, E911CAMA), E1 CAS (R2 MFC), R1.5, numerous protocol and country variants ISDN PRI: ETSI/EURO ISDN, ANSI NI2 and other variants (DMS100, 5ESS), VN3, VN4, VN6 ISDN BRI: Euro ISDN, VN4/6 or QSIG
Analog Signaling	Loop Start FXS/FXO, Caller ID, polarity reversal, distinctive ringing, visual Message Waiting Indication

Control and Management

Control Protocols	Static and dynamic routing (RIP1, RIP2, OSPF, BGP), multi-VRF, L2 bridging SIP-TCP, SIP-UDP, SIP-TLS, IPv6 Supported Cloud Resilience Package and Standalone Survivability for service continuity, Microsoft RBA
Operations & Management	AudioCodes' Element Management System Embedded HTTP Web Server, SNMP V2/V3, SSH, Telnet, TR-069 Remote configuration and software download via HTTP or HTTPS, RADIUS, Syslog (for events and alarms)

Security

Session Border Controller (SBC)	SIP Header conversion SIP Normalization Survivability IP-to-IP routing translations of various SIP transport types; UDP, TCP, TLS Translation of RTP, SRTP Support SIP trunk with multi-ITSP (Registrations to ITSPs is invoked independently) Topology hiding Call Admission Control Call Black/White list
Data Firewall	IPsec ESP - Tunnel mode Encryption Authentication IKE mode - IPsec VPN IDS/IPS: - Fragmented traffic - Malformed Request - Ping of Death - Properly formed request from unauthenticated source - DDoS attack - SYN flood Stateful packet inspection firewall DMZ Host Packet Filtering Application Layer Gateway

OSN Server Platform (Optional)

Single Chassis Integration	Embedded, open Network Solution Platform for third-party services
CPU Options	Intel Atom 1.6 GHz Intel Celeron Dual Core 1.1GHz
Memory	1G RAM, 2G RAM, 4G RAM depends on model

Hardware Specifications

Power Supply:	Single, universal 90-260 V AC
Physical Dimensions:	320mm x 345mm x 1U

Regulatory Compliance

Safety and EMC Standards	UL60950-1, EN60950-1, CB certification including National deviations EN55024, EN55022 Class A, EN61000-3-2, EN61000-3-3, EN300 386, FCC 47 Part 15 Class A
Telecommunication Standards	TIA/EIA-IS-968, ETSI ES 203 021 (FXO interface)

ABOUT AUDIOCODES

AudioCodes Ltd. (NasdaqGS: AUDC) designs, develops and sells advanced Voice-over-IP (VoIP) and converged VoIP and Data networking products and applications to Service Providers and Enterprises. AudioCodes is a VoIP technology market leader, focused on converged VoIP and data communications, and its products are deployed globally in Broadband, Mobile, Enterprise networks and Cable. The Company provides a range of innovative, cost-effective products including Media Gateways, Multi-Service Business Routers, Session Border Controllers (SBC), Residential Gateways, IP Phones, Media Servers, Value Added Applications and Professional Services. AudioCodes' underlying technology, VolPerfectHD™, relies on AudioCodes' leadership in DSP, voice coding and voice processing technologies. AudioCodes' High Definition (HD) VoIP technologies and products provide enhanced intelligibility and a better end user communication experience in Voice communications.

International Headquarters

1 Hayarden Street,
Airport City
Lod 70151, Israel
Tel: +972-3-976-4000
Fax: +972-3-976-4040

AudioCodes Inc.

27 World's Fair Drive,
Somerset, NJ 08873
Tel: +1-732-469-0880
Fax: +1-732-469-2298

Contact us: www.audiocodes.com/info
Website: www.audiocodes.com

©2016 AudioCodes Ltd. All rights reserved. AudioCodes, AC, HD VoIP, HD VoIP Sounds Better, IPmedia, Mediant, MediaPack, What's Inside Matters, OSN, SmartTAP, User Management Pack, VMAS, VolPerfect, VolPerfectHD, Your Gateway To VoIP, 3GX, VocaNom, AudioCodes One Voice and CloudBond are trademarks or registered trademarks of AudioCodes Limited. All other products or trademarks are property of their respective owners. Product specifications are subject to change without notice.

Ref. # LTRM-30040 11/16 V.7

