

## Quick Guide

### 1. Before Installing

Congratulations on purchasing your **AudioCodes C448HD IP Phone!**

Before installing your phone, make sure the following items are included in the shipped box:

- ✓ C448HD IP Phone
- ✓ AC power adapter (optional)
- ✓ Cat 5e Ethernet cable
- ✓ Handset
- ✓ Handset cord
- ✓ Desktop stand
- ✓ Wall mount

### 2. Physical Description



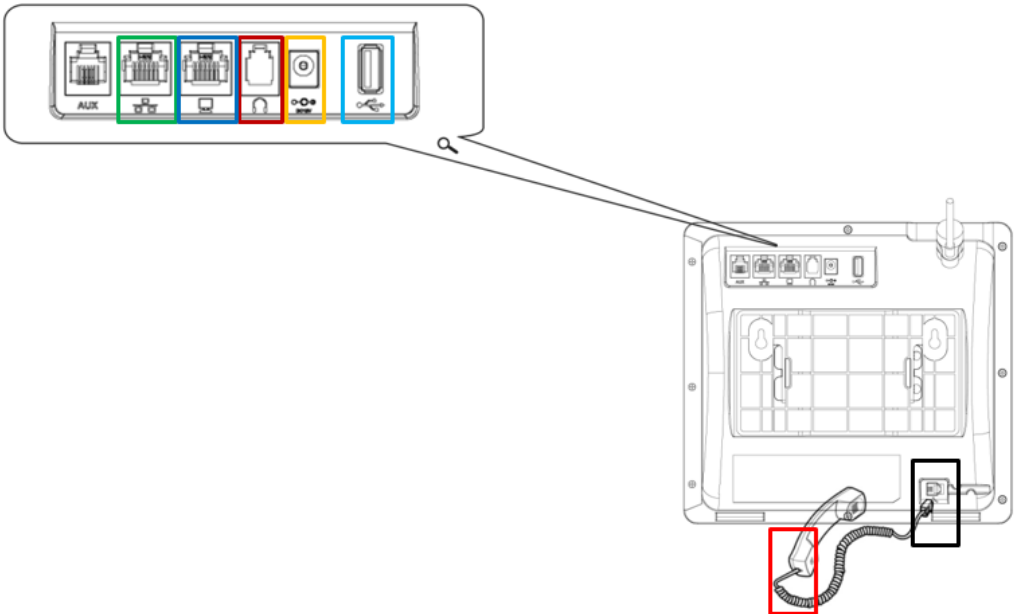
### 3. Cabling the Phone



**Warning:** Prior to connecting power, refer to the *Compliance and Regulatory Information* document at <https://www.audiocodes.com/library/technical-documents>.

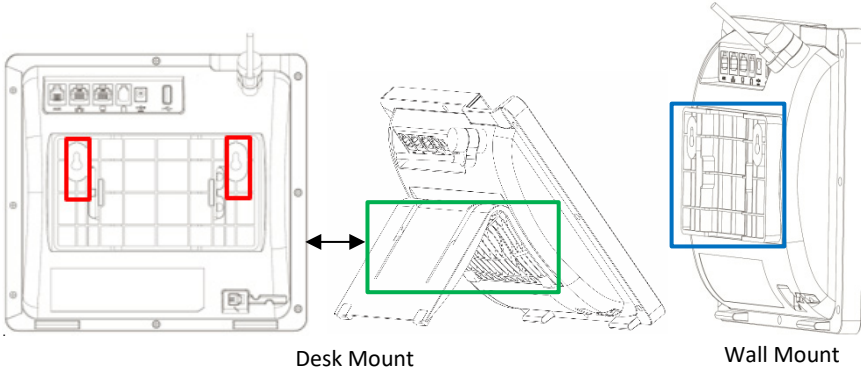
#### To cable the phone:

1. [Refer to the illustration below] Connect the **short, straight end** of the phone cord to the handset and the **longer straight end** of the cord to the handset jack on the phone.
2. (Optional) Connect a headset to the **RJ-9 headset port** or to the **USB port**.
3. Connect the **RJ-45 LAN port** to your LAN network (LAN port or LAN switch/router) with a CAT 5 / 5e Ethernet cable.
4. Connect the **RJ-45 PC port** to a computer with a CAT 5 / 5e straight-through Ethernet cable.
5. Connect the connector tip of the AC power adapter to the phone's **DC 12V power socket** and connect the two-prong AC adapter directly to the electrical wall outlet. When the phone powers up, all the LEDs momentarily light up.



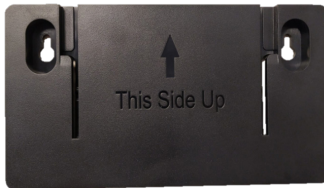
## 4. Mounting the Phone on a Desktop or Wall

- ✓ **Desktop:** Slide the L-shaped stand's short or long edge **slots** onto **these** rails.
- ✓ **Wall:** Slide the **wall mount fitting** onto **these** rails.



### 🔧 To mount the phone on a wall:

1. Using the mounting plate's two screw holes as a template, mark the locations on the wall where you want to mount the phone. The horizontal distance between the screw holes is  $4 \frac{7}{8}$  inches (123.8 mm).

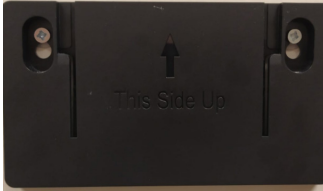


2. Drill a hole in the wall at the two marked locations.
3. Insert an anchor (not supplied) in each hole for the 3.9mm screws.
4. Insert two screws (not supplied) into the two masonry anchors. It's recommended to use tapp 3.9 x 32mm (DIN 7981 C) self-tapping pan Phillips-head screws.



5. Leave about  $\frac{3}{16}$  inch or 5 mm between the screw head and the wall.
6. On the rear of the phone, detach the base used for desktop mounting.

7. Hang the plate on the screws.



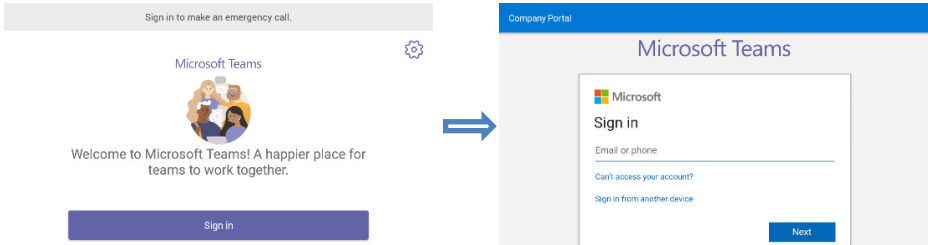
8. Attach the phone to the plate.



## 5. Signing In

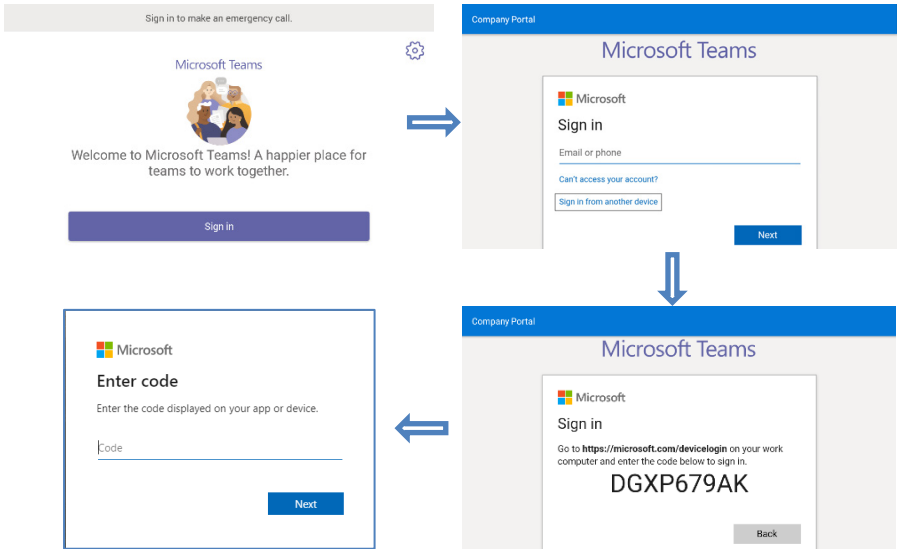
### To sign in with your username and password:

1. After connecting to the network, touch the **Sign In** button.
2. Enter your username (e.g., johnb@company.com).
3. Enter your password (the same as your Microsoft Exchange password).



**To sign in from another device:**

1. Touch the **Sign In** button, and then select the **Sign in from another device** option.
2. In the Web browser, navigate to <https://microsoft.com/devicelogin>.
3. In the Microsoft Web page, enter the code shown on the C448HD screen, and then complete the process by entering your username and password.



## 6. Basic Phone Operations

- ☞ **To make a call:** Enter a phone number, and then touch the **DIAL** menu. To call a phone contact, touch the **DIRECTORY** menu, select the directory contact, and then touch the **DIAL** menu.
- ☞ **To redial a number:** Press the **REDIAL** key, select a dialed number, and then touch the **DIAL** menu.
- ☞ **To answer a call:** Pick up the handset, or press the speaker or headset key.
- ☞ **To put a call on hold and make another call:** Press the **HOLD** key on the phone, touch the **CALL MENU** and then select **New Call**. Enter a phone number, and then press **DIAL**. To return to the held call, navigate to the held call, and then uncheck the **HOLD** touch menu.
- ☞ **To mute yourself:** Press the mute key. To unmute yourself, press the mute key again.
- ☞ **To transfer a call:** During a call, press the **TRANSFER** key on the phone, enter a number in the **Transfer to...** field, and then press the **TRANSFER** touch menu.
- ☞ **To forward incoming calls to another phone:**
  1. When the phone is idle, touch the **FORWARD** menu, and then touch **Forward to a number**.
  2. Enter the number to which you want to forward the calls, and then touch the **START** menu. To deactivate call forwarding, touch the **FORWARD** menu, and then select **Do not forward calls**.

### Notice Information

Information contained in this document is believed to be accurate and reliable at the time of printing. However, due to ongoing product improvements and revisions, AudioCodes cannot guarantee accuracy of printed material after the Date Published nor can it accept responsibility for errors or omissions. Updates to this document can be downloaded from <https://www.audiocodes.com/library/technical-documents>.

This document is subject to change without notice.

Date Published: September-01-2020

Document #: LTRT-13252

