

Teams Sign-in Implementation for AudioCodes MTRA Devices

Version 1.0

Table of Contents

Notice.....	iii
Security Vulnerabilities	iii
WEEE EU Directive	iii
Customer Support.....	iii
Stay in the Loop with AudioCodes.....	iii
Abbreviations and Terminology	iii
Related Documentation.....	iii
Document Revision Record	iv
Documentation Feedback.....	iv
1 Introduction	1
2 Prerequisites	2
2.1 Network Environment	2
2.2 Microsoft Teams Room Licenses	2
2.2.1 Teams Room Pro License.....	2
2.2.2 Teams Room Basic License	3
3 Creating a Resource Account for Your MTRA	4
4 Pairing RX-PAD and MTRA	7
4.1 AudioCodes Pairing Procedure	7
4.2 Signing into the MTRA Room Account	8
5 Migrating to AOSP.....	9
5.1 Prerequisites.....	9
5.2 Migration Steps	9
5.3 Legacy Devices.....	9
5.4 AOPS Related Documentation.....	10

Notice

Information contained in this document is believed to be accurate and reliable at the time of printing. However, due to ongoing product improvements and revisions, AudioCodes cannot guarantee accuracy of printed material after the Date Published nor can it accept responsibility for errors or omissions. Updates to this document can be downloaded from <https://www.audiocodes.com/library/technical-documents>.

This document is subject to change without notice.

Date Published: December-31-2025

Security Vulnerabilities

All security vulnerabilities should be reported to vulnerability@audiocodes.com.

WEEE EU Directive

Pursuant to the WEEE EU Directive, electronic and electrical waste must not be disposed of with unsorted waste. Please contact your local recycling authority for disposal of this product.

Customer Support

Customer technical support and services are provided by AudioCodes or by an authorized AudioCodes Service Partner. For more information on how to buy technical support for AudioCodes products and for contact information, please visit our website at <https://www.audiocodes.com/services-support/maintenance-and-support>.

Stay in the Loop with AudioCodes



Abbreviations and Terminology

Each abbreviation, unless widely used, is spelled out in full when first used.

Related Documentation

Document Name
RXV200 MTRA Compute User's and Administrator's Manual
RX-PAD Room Controller User's and Administrator's Manual
RXV81 MTRA Video Collaboration Bar User's and Administrator's Manual
RXV81 MTR on Android Video Collaboration Bar with RX-PAD or RCU Quick Guide
RXV200 MTR on Android Compute Unit Quick Installation Guide
Pairing RX-PAD with Microsoft Teams Room on Android

Document Revision Record

LTRT	Description
11342	Initial document release

Documentation Feedback

AudioCodes continually strives to produce high quality documentation. If you have any comments (suggestions or errors) regarding this document, please fill out the Documentation Feedback form on our website at <https://online.audiocodes.com/documentation-feedback>.

1 Introduction

This document describes the prerequisites, procedures, and steps for implementing your AudioCodes Microsoft Teams Room on Android (MTRA) system to sign in and operate seamlessly with Microsoft Teams.

The document is intended for System Admins and assumes knowledge in networking, Microsoft Teams terminology and cabling.



IMPORTANT

Before you can start the Teams implementation procedure, make sure all prerequisites are met. For details, see [Prerequisites](#).

Implementing Teams sign-in on your MTRA consists of:

- [Creating a Resource Account for Your MTRA](#)
- [Pairing RX-PAD and MTRA](#)

In addition, if your existing Teams devices are still managed by the Microsoft Intune Android Device Manager, migrate them to Android Open-Source Project (see [Migrating to AOSP](#)).

2 Prerequisites

This section describes the preliminary requirements that must be met before you can start with the Teams sign-in implementation procedure.



IMPORTANT

If you do not meet *all* of the prerequisites listed below, the Teams Sign-in implementation procedure might fail, or sign-in to Teams might fail after completing the procedure.

2.1 Network Environment

Before deploying your MTRA at a specific location, the IT admin must prepare the environment for the installation:

- The basic MTRA units – RX-PAD and RXV81/RXV200 – *must be on the same subnet*. This means that the same subnet must contain the PoE port for the RX-PAD and the ETH port for the RXV unit.
- Open UDP port (i.e., port 9999) or a stable Wi-Fi connection, required for pairing AudioCodes devices
- Power sockets to power up the MTRA units and peripherals
- All Microsoft 365 URLs and IP address ranges relevant for deploying Teams Rooms on Android must be available and open. For details, see <https://learn.microsoft.com/en-us/microsoft-365/enterprise/urls-and-ip-address-ranges?view=o365-worldwide>.

2.2 Microsoft Teams Room Licenses

For your MTRA to work with Teams, you need a Microsoft Teams Room Basic license or a Microsoft Teams Room Pro license. The license is tied to your MTRA through a Resource Account, which, if not already existing, you create as described in [Creating a Resource Account for Your MTRA](#).



IMPORTANT

For an MTRA to work with Teams, a Microsoft Teams Room license is required. Other types of licenses, such as Teams user licenses or Teams shared licenses, will not work.

2.2.1 Teams Room Pro License

Microsoft Teams Rooms Pro delivers enhanced in-room meeting experience: Intelligent audio and video, front row and large galleries, and dual screen support. It also provides advanced management features like remote device management, conditional access policies, and detailed device analytics.

In addition, the Pro license can be used to license both certified Teams Rooms systems and Teams Panels.

This license is especially recommended for:

- Medium and enterprise organizations
- Small organizations with many meeting rooms or advanced needs

2.2.2 Teams Room Basic License

Microsoft Teams Rooms Basic provides core meeting experiences to organizations that purchase a certified Microsoft Teams Rooms system, at no additional cost.

The Teams Rooms Basic license includes scheduling, joining meetings, content sharing, and collaborative white boarding, as well as basic security and management capabilities out-of-the-box.

A Teams Rooms Basic license can be used to license a single certified Teams Rooms system in a room. However, if you want to log into more than one Teams Rooms system in a room using the same resource account, you need to use a Teams Rooms Pro license.

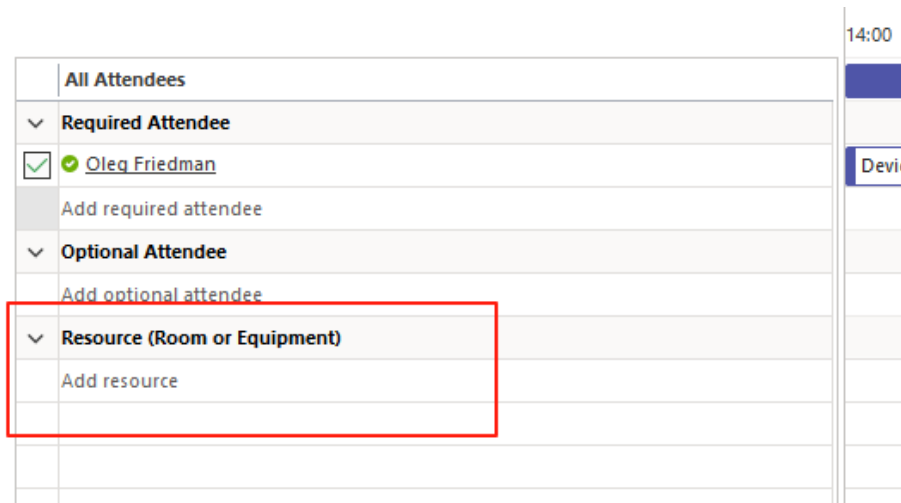
You can assign up to 25 Microsoft Teams Rooms Basic licenses to Teams Rooms systems in your organization. If you need to license more than 25 Teams Rooms systems, those additional licenses need to be Teams Rooms Pro licenses, Teams Rooms Basic licenses can be used to license Teams Rooms systems only and not Teams Panels.

For an in-depth comparison of Teams Rooms licenses to determine which one is the best for your organization, refer to <https://learn.microsoft.com/en-us/microsoftteams/rooms/rooms-licensing>.

3 Creating a Resource Account for Your MTR

Microsoft 365 resource accounts are non-licensed accounts for shared resources like conference rooms or equipment.

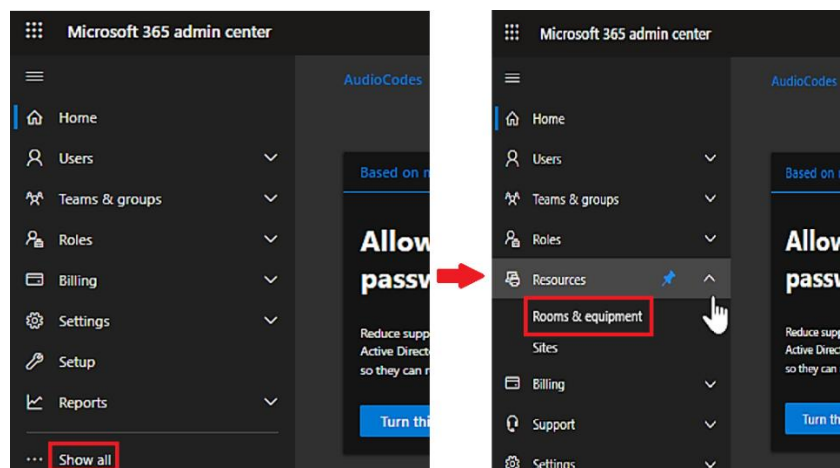
A Microsoft 365 Teams Rooms account is a type of resource account used in conjunction with the Microsoft Teams Rooms (MTR) app to enable physical meeting spaces to function as a rich, collaborative Teams experience. To make use of this app during a meeting, you book the corresponding room (i.e., include its MTR resource account) when you set up a meeting invitation. The resource account automatically accepts or declines the invitation depending on its calendar availability.



The name of the resource account should be the name of the meeting room.

To create an MTR resource account:

1. Navigate to the 365 Admin Center landing page.
2. In the left menu pane, click **Show all** to view all options, then click **Resources > Rooms & equipment**.



3. On the 'Rooms & equipment' page, click **Add resource**, then fill in details:
 - For 'Resource type', select **Room**.
 - For 'Name' and 'Email', specify an identifying name.

Add resource

Create a mailbox for things like a conference room, company car, or equipment that everyone needs to use, so that those resources are reservable.

[Learn more about resource types](#)

Resource type

Room

Name

Test_MTR

The resource name appears in the address book, and in the To and From lines in meeting invitations and responses.

Email

Test_MTR

Domains

@ audiocodes.us

The email address is used to send meeting invitations to the resource.

Capacity

10

The number of people who can fit in the room or use the equipment at the same time.

Location

Anywhere, USA

Phone number

Save

4. Click **Save**. After a short delay, the resource account is created.
5. In the left menu page, click **Users > Active users**. A list of existing users (accounts) is displayed.
6. Find the resource account you created above, hover over the name, and then click the blue key icon:



7. Change the password of the resource account:
 - a. Specify a new strong password and store it in a safe place.
 - b. Make sure that the 'Require this user to change their password when they log in' checkbox is *not* selected, then close the dialog.

Reset password

Test_MTR@audiocodes.us

☐ Automatically create a password

Passwords must be between 8 and 256 characters and use a combination of at least three of the following: uppercase letters, lowercase letters, numbers, and symbols.

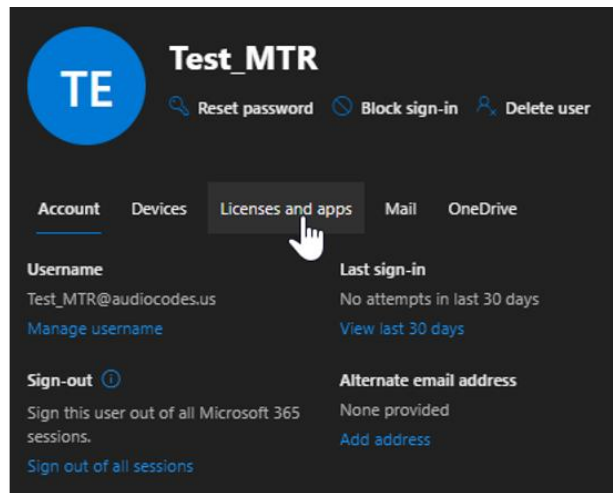
Password

☐ Require this user to change their password when they first sign in

☐ Email the sign-in info to me

Reset password

8. Assign the appropriate license to the resource account:
 - a. Click the name of the account, then click the **Licenses and apps** tab.



- b. Select the appropriate license (**Microsoft Teams Rooms Basic** or **Microsoft Teams Rooms Pro**). For details, see [Microsoft Teams Room Licenses](#).
9. Use the [Teams Rooms sign in test](#) to verify that the resource account was successfully created and configured for successful sign-in.



For further details, see [Creating and Configuring Resource Accounts for Teams Rooms and Panels](#).

4 Pairing RX-PAD and MTRA



IMPORTANT

Prior to starting the pairing procedure, make sure that you adhere to all requirements listed in [Prerequisites](#), and that the distance between the pairing devices is close enough for uninterrupted Bluetooth connectivity.

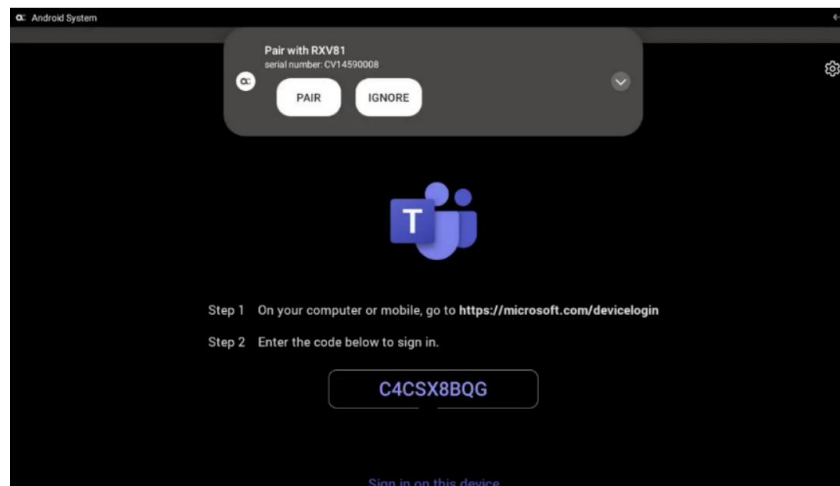
This section describes how to pair your RX-PAD Meeting Room Controller with your RXV81 or RXV200 MTRA device. The pairing process consists of two main stages:

1. **AudioCodes pairing stage**—semi-automated, AudioCodes proprietary procedure where the user specifies the MTRA device to be paired with a given RX-PAD (see [AudioCodes Pairing Procedure](#))
2. **Microsoft pairing stage**—automatically kicked off once the user is signed in with the same resource account on both the MTRA device and the RX-PAD (see [Signing into the MTRA Room Account](#))

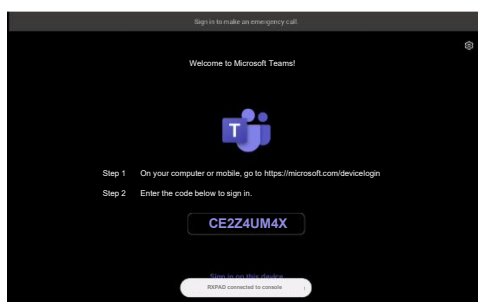
4.1 AudioCodes Pairing Procedure

The following procedure describes how to pair RX-PAD with the MTRA.

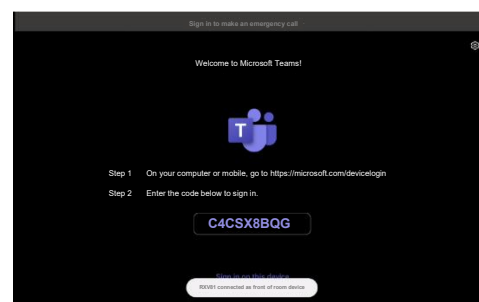
1. Connect the RX-PAD and MTRA to the network; the pairing process automatically begins.
2. On the RX-PAD, click **PAIR** for the specific MTRA device that you want to pair with RX-PAD. This device is identified by its serial number.



3. Once pairing is complete, the RX-PAD displays a message at the bottom of the screen. This message specifies the connection type of the RX-PAD. On the MTRA device screen, a similar message is displayed:



MTRA



RX-PAD



The MTRA and RX-PAD screens display the codes you will need for signing in (see below).

4.2 Signing into the MTRA Room Account

The following procedure describes how to sign into the Microsoft Room account you created before (see [Creating a Resource Account for Your MTRA](#)). You need to do this separately on both the RX-PAD and the MTRA.

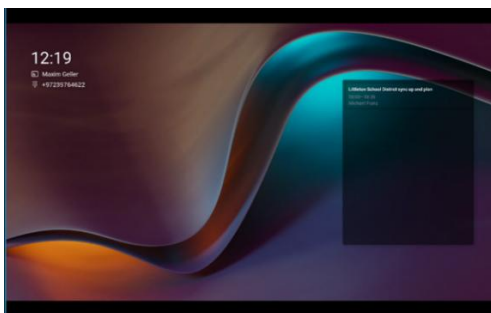
To sign in:

1. Go to <https://microsoft.com/devicelogin>; the following appears:

A screenshot of the Microsoft login page. At the top is the Microsoft logo. Below it is the heading 'Enter code'. Underneath is the instruction 'Enter the code displayed on your app or device.' There is a text input field labeled 'Code' with a blue underline. At the bottom right is a blue button labeled 'Next'.

2. Enter the code that is displayed on the paired RX-PAD and MTRA (e.g., "C4Y8MK2P3"), and then click **Next**.
3. Follow the on-screen instructions to sign into your Microsoft account and then close your web browser.

When setup is complete (may take several minutes), the home page is displayed:



MTRA



RX-PAD

5 Migrating to AOSP

Starting with release 2.6.293, Microsoft Teams Android devices use Microsoft Intune Android Open-Source Project (AOSP) for device management. AOSP replaces the legacy Android Device Administrator and provides a more reliable deployment, improved admin experience, and a foundation for future management features across Teams Rooms, panels, phones, and displays.

5.1 Prerequisites

The following is required to perform the migration:

- The devices to be migrated are Teams Android devices enrolled with the Device Administrator.
- The devices support migrating to AOSP management.
- The user performing the migration has Intune Admin permissions in your organization's Microsoft 365 environment.

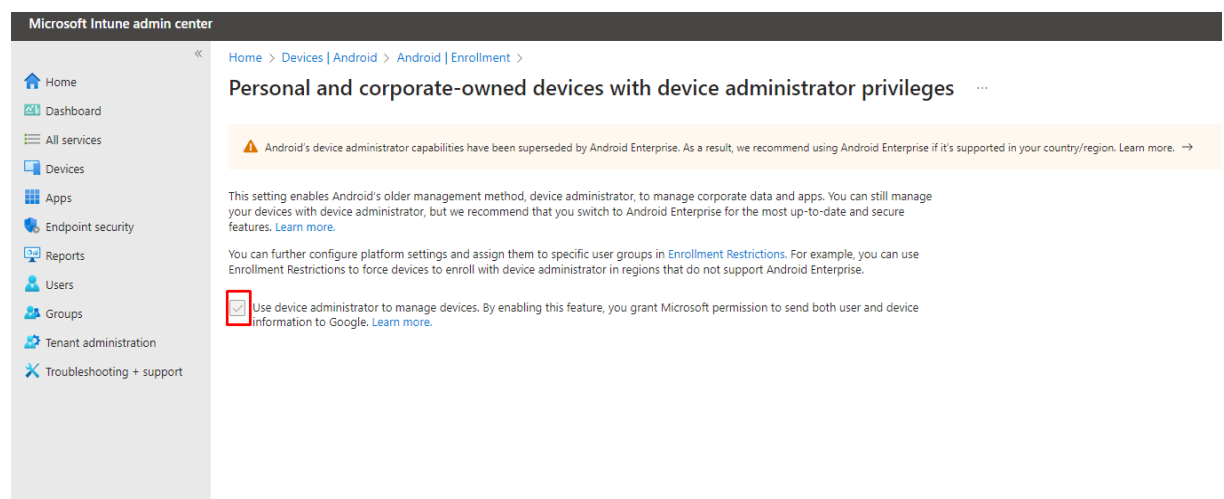
5.2 Migration Steps

Since migration, the following steps are necessary to enable MTRA devices to be enrolled with Microsoft Intune:

1. In the Intune Management Console (<https://intune.microsoft.com/>), create a dedicated AOSP Management Enrollment Profile, with a non-expiring authentication token.
2. Create new policies for AOSP:
 - Configuration Policy—to enforce device restrictions, such as blocking screen capture on devices
 - Compliance Policy—to enforce compliance standards, such as blocking of rooted devices, minimum/maximum OS version, and encryption of device storage
3. Deploy AOSP management-capable device firmware on devices. You can manually update a device with the firmware or schedule automatic updates.

5.3 Legacy Devices

Devices running a build version prior to 2.6.301 cannot migrate to AOSP. To continue managing them through the legacy Android Device Manager, navigate to and select the **Use device administrator to manage devices** checkbox.



5.4 AOPS Related Documentation

For more information and instructions about the AOSP migration, refer to the following documents:

Topic	Document
AudioCodes guide for AOSP migration	AOSP Migration for AudioCodes Teams Devices
Android Migration Guide	Microsoft article: Migrating Teams Android Devices to AOSP Device Management from Device Administrator
Moving Teams Android devices to AOSP device management	Microsoft article: Moving Teams Android devices to AOSP Device Management

International Headquarters

Naimi Park
6 Ofra Haza Street
Or Yehuda, 6032303, Israel
Tel: +972-3-976-4000
Fax: +972-3-976-4040

AudioCodes Inc.

80 Kingsbridge Rd
Piscataway, NJ 08854, USA
Tel: +1-732-469-0880
Fax: +1-732-469-2298

Contact us: <https://www.audiocodes.com/corporate/offices-worldwide>

Website: <https://www.audiocodes.com>

©2025 AudioCodes Ltd. All rights reserved. AudioCodes, AC, HD VoIP, HD VoIP Sounds Better, IPmedia, Mediant, MediaPack, What's Inside Matters, OSN, SmartTAP, User Management Pack, VMAS, VoIPerfect, VoIPerfectHD, Your Gateway To VoIP, 3GX, AudioCodes One Voice, AudioCodes Meeting Insights, and AudioCodes Room Experience are trademarks or registered trademarks of AudioCodes Limited. All other products or trademarks are property of their respective owners. Product specifications are subject to change without notice.

Document #: **11342**

