

Quick Guide

1. Before Installing

Congratulations on purchasing your **AudioCodes 425HD IP Phone**!

Before installing your phone, make sure the following items are included in the shipped box:

- ✓ 425HD IP Phone
- ✓ AC power adapter (optional)
- ✓ Cat 5e Ethernet cable
- ✓ Handset
- ✓ Handset cord
- ✓ Desktop stand with two screws

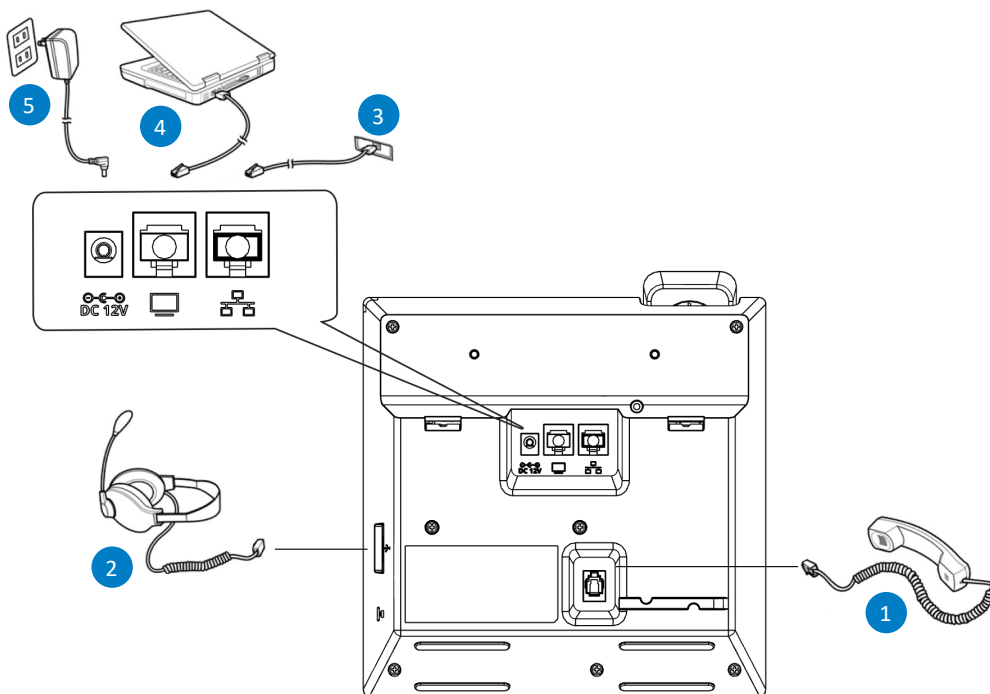
2. Physical Description



3. Cabling the Phone

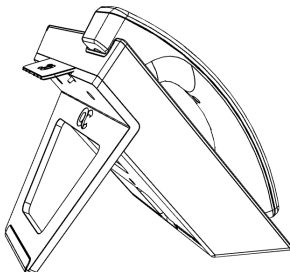
To cable phone:

1. Connect the short, straight end of the handset cord to the handset. Connect the longer straight end of the cord to the phone's handset jack.
2. (Optional) Connect a headset to the phone's USB port.
3. Connect the phone's RJ-45 LAN port to your LAN network (LAN port or LAN switch/router), using a CAT 5/5e Ethernet cable. This port supports Power over Ethernet (PoE), allowing you to power the phone from the Ethernet cable instead of the power adapter.
4. Connect the phone's RJ-45 PC port to a computer, using a CAT 5/5e straight-through Ethernet cable.
5. (Optional) Connect the DC plug of the power supply (supplied) to the phone's DC 12V power jack, and then connect the power supply to the electrical wall outlet. When the phone powers up, all the phone's LEDs momentarily light up.



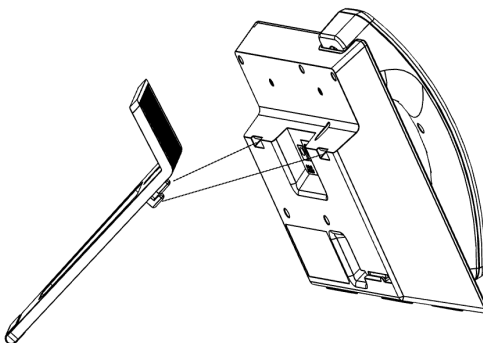
4. Mounting Phone on a Desktop

Your phone is shipped with a desk stand for desktop mounting.

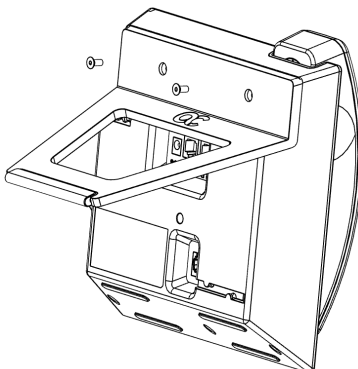


To desk-mount phone:

1. Align the two hooks of the desk stand (supplied) with the corresponding slots on the phone base:



2. Gently push the stand down until it snaps securely into place.
3. Secure the stand to the phone by fastening the two screws (supplied):

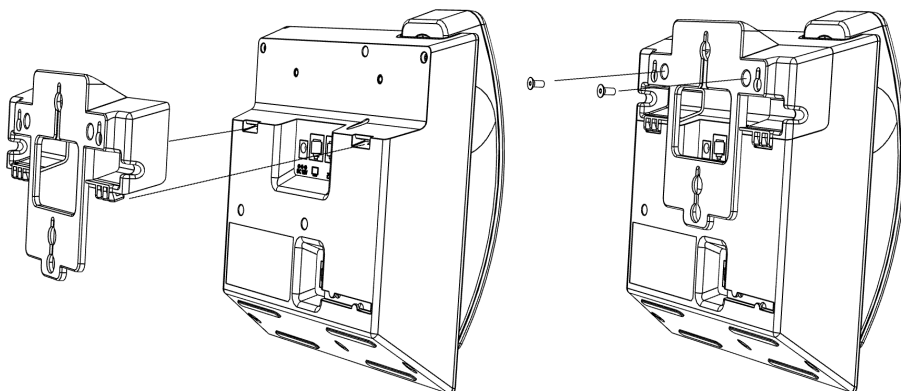


5. Mounting Phone on a Wall

Use AudioCodes wall-mounting bracket kit (separate orderable item) to mount the phone on a wall or to hang it on your Ethernet wall plate.

To wall-mount phone:

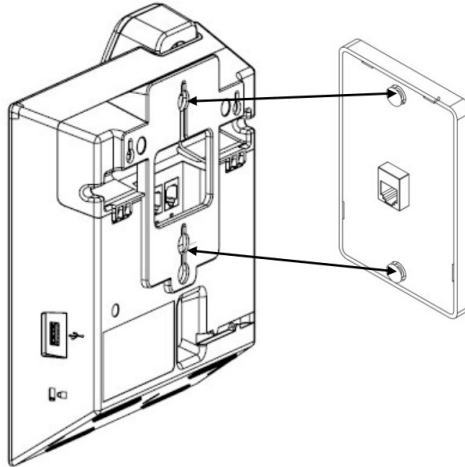
1. Align the two clips of the wall-mounting bracket (separate orderable item) with the corresponding slots on the bottom of the phone.
2. Gently push the bracket down until it snaps securely into place.
3. Secure the bracket to the phone by inserting the two screws.



4. Prepare the mounting screws on the wall:
 - a. Mark the locations of the screw holes on the wall.
 - b. Drill a hole in the wall for each location.
 - c. Insert wall anchors (not supplied) into the holes and insert screws (not supplied) into them.
 - d. Leave a gap (approx. 5 mm) between screw head and wall for hanging the mounting bracket.
5. Hang the bracket (attached to phone) on the screw heads and tighten the screws if necessary.

☛ To wall-mount phone on Ethernet wall plate:

1. Attach the wall-mounting bracket to the phone, as described above for regular wall mounting.
2. Align the wall-mounting bracket's holes over the Ethernet wall plate's mounting standoffs.
3. Press the phone on to the standoffs so that it hangs on the Ethernet wall plate.



The holes in the wall-mounting bracket (attached to the phone) comply with many mounting standoffs on Ethernet wall plates available in the market.

6. Basic Phone Operations

For basic phone operations, refer to AudioCodes' *425HD User's and Administrator's Manual*.

7. Warnings

FCC Caution

Part 15.21

Any Changes or modifications not expressly approved by the party responsible for compliance could void the user's authority to operate the equipment.

Part 15.19

This device complies with part 15 of the FCC Rules. Operation is subject to the following two conditions: (1) This device may not cause harmful interference, and (2) this device must accept any interference received, including interference that may cause undesired operation.

Part 15.105

Note: This equipment has been tested and found to comply with the limits for a Class B digital device, pursuant to part 15 of the FCC Rules. These limits are designed to provide reasonable protection against harmful interference in a residential installation. This equipment generates, uses and can radiate radio frequency energy and, if not installed and used in accordance with the instructions, may cause harmful interference to radio communications. However, there is no guarantee that interference will not occur in a particular installation. If this equipment does cause harmful interference to radio or television reception, which can be determined by turning the equipment off and on, the user is encouraged to try to correct the interference by one or more of the following measures:

- ✓ Reorient or relocate the receiving antenna.
- ✓ Increase the separation between the equipment and receiver.
- ✓ Connect the equipment into an outlet on a circuit different from that to which the receiver is connected.
- ✓ Consult the dealer or an experienced radio/TV technician for help.

FCC RF Radiation Exposure Statement

1. This Transmitter must not be co-located or operating in conjunction with any other antenna or transmitter.
2. This equipment complies with RF radiation exposure limits set forth for an uncontrolled environment.
3. This equipment should be installed and operated with minimum distance 20cm between the radiator& your body.

User manuals for license-exempt radio apparatus shall contain the following or equivalent notice in a conspicuous location in the user manual or alternatively on the device or both.

This device complies with Industry Canada license-exempt RSS standard(s). Operation is subject to the following two conditions:

- (1) this device may not cause interference, and
- (2) this device must accept any interference, including interference that may cause undesired operation of the device.

Le présent appareil est conforme aux CNR d'Industrie Canada applicables aux appareils radio exempts de licence. L'exploitation est autorisée aux deux conditions suivantes :

- (1) l'appareil n' doit pas produire de brouillage, et
- (2) l'utilisateur de l'appareil doit accepter tout brouillage radioélectrique subi, même si le brouillage est susceptible d'en compromettre le fonctionnement.

Radio apparatus containing digital circuitry which can function separately from the operation of a transmitter or an associated transmitter, shall comply with ICES-003. In such cases, the labelling requirements of the applicable RSS apply, rather than the labelling requirements in ICES-003. This Class B digital apparatus complies with Canadian ICES-003.

Cet appareil numérique de la classe B est conforme à la norme NMB-003 du Canada.

IC SAR Warning

This equipment should be installed and operated with minimum distance 20 cm between the radiator and your body.

Lors de l' installation et de l' exploitation de ce dispositif, la distance entre le radiateur et le corps est d 'au moins 20 cm.

Notice Information

Information contained in this document is believed to be accurate and reliable at the time of publishing. However, due to ongoing product improvements and revisions, AudioCodes cannot guarantee accuracy of material after the Date Published nor can it accept responsibility for errors or omissions. Updates to this document can be downloaded from <https://www.audiocodes.com/library/technical-documents>.

This document is subject to change without notice.

Date Published: February-23-2025

Document #: LTRT-13382

